



Elegant & Efficient

WEATHERPROOF WIRING DEVICE IP66



RR Switches is part of RR Global, a USD 850+ Million conglomerate in the electrical sector with a presence in over 85 countries globally. Spread across multiple business verticals including Switches, RR Global has always endeavored to create products of the highest quality using the latest innovative technology.

RR Switches range of Weather Proof Wiring Devices IP66, provides you with an extensive range of products including Wall Switches, 1 Gang and 2 Gang Switch Sockets amongst others. Each of our products adheres to the highest international safety and quality standards, ensuring you get only the most efficient, reliable and long lasting switches at the most competitive prices.

Distributed from our 65,000 sq.ft. central facility in the Sharjah & Dubai, at RR Switches, we are committed with providing our clients across the region, products of the highest quality. Therefore, we leave no stone unturned in ensuring you get nothing but the finest products that money can buy.



WEATHERPROOF WIRING DEVICES

RR Switches range of Weatherproof Outdoor Switches and Socket is a convenient addition to your garden, allowing you to safely run electricity in your outdoor areas.

RR Weatherproof IP66 range is ideal for use for exterior application as it is made from a tough and robust polycarbonate ensuring non-fade and crack resistant life, our range are fully weatherproof, so you can safely use your outdoor switches.

With secure and easy to open see-through covers, choose from a single or double socket to suit your needs. Whether you want to plug in your power tools for some garden landscaping, vacuum the inside of your car or jet wash the driveway, we have a choice of outdoor sockets to suit your needs.

Our range provide reliable, weatherproof protection.

FEATURES & BENEFITS

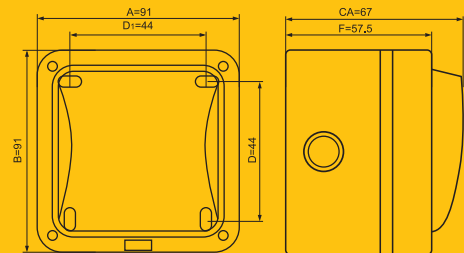
- The product is manufactured from robust, impact-resistant polycarbonate with multiple gland entry positions.
- They are UV protected to prevent fading in colour and will maintain operations in extremes of heat and cold.
- The RR Weather-proof Wiring Devices ingress-protected – IP66 against all dust ingress and can with stand high-pressure water jets from any direction.
- Provision of neon indicators that can be wired to illuminate when off or on depending on wiring blanking caps.
- Includes clearly marked terminals with backed out captive screws for easy installation.

20A WALL SWITCHES – IP66

CR-1002-IP66



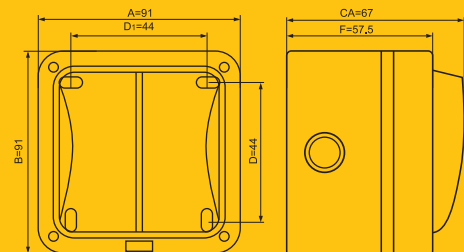
1 GANG 2 WAY SWITCH
Rated Voltage: 250V
Load Current: 20A
Frequency: 50/60Hz



CR-1005-IP66



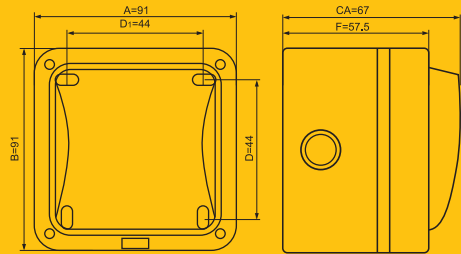
2 GANG 2 WAY SWITCH
Rated Voltage: 250V
Load Current: 20A
Frequency: 50/60Hz



CR-1003-IP66



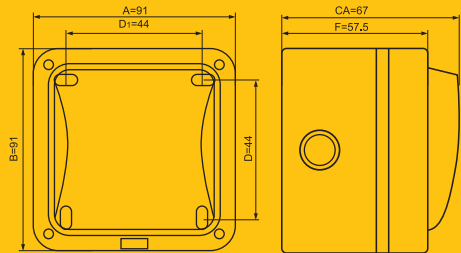
1 GANG 2 WAY BELL PUSH SWITCH
Rated Voltage: 250V
Load Current: 20A
Frequency: 50/60Hz



CR-1012-IP66



DP SWITCH
Rated Voltage: 250V
Load Current: 20A
Frequency: 50/60Hz

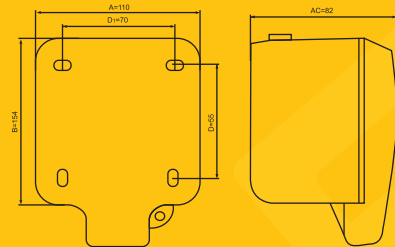


13A SWITCH SOCKETS - IP66

CR-3001-IP66



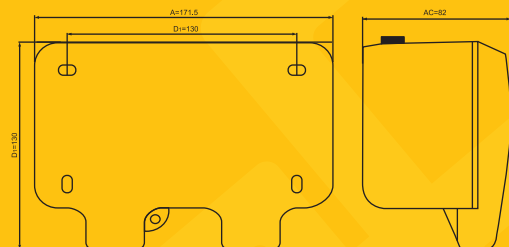
1 GANG SWITCH SOCKET
Rated Voltage: 250V
Load Current: 13A
Frequency: 50/60Hz



CR-3002-IP66



2 GANG SWITCH SOCKET
Rated Voltage: 250V
Load Current: 13A
Frequency: 50/60Hz



20A WALL SWITCHES – IP66

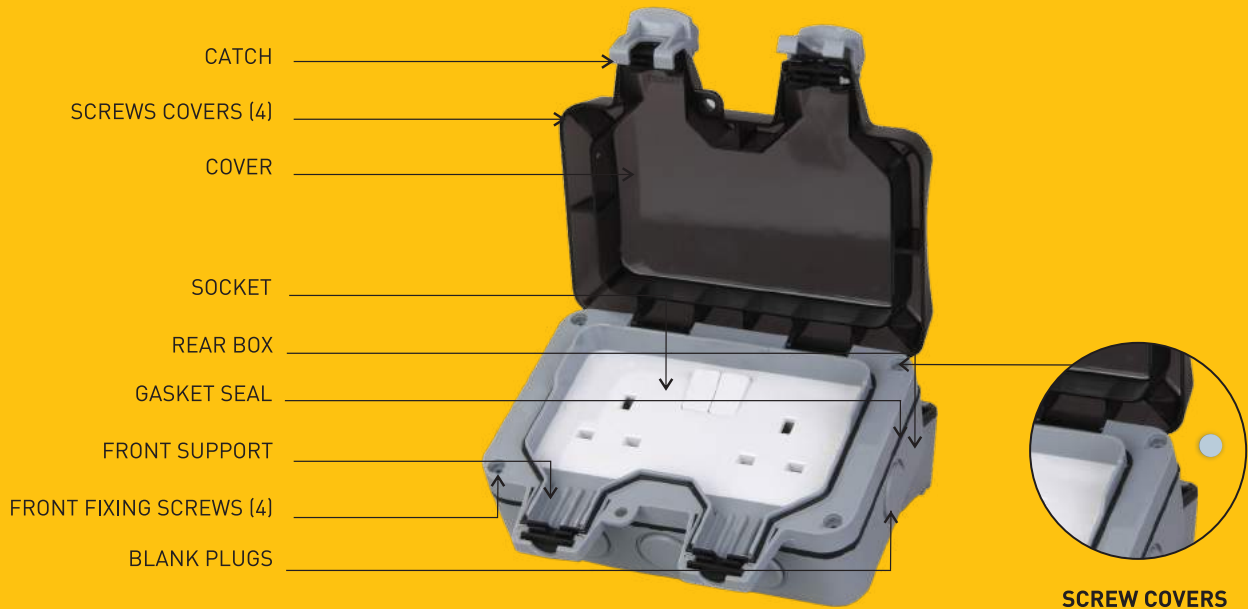


- Clearly marked terminals with backed out captive screws for easy installation
- 20 Amp, 20AX inductive rated
- Covers to seal the fixing screws
- Earth terminal in mounting box
- All cable entries in the 4 sides have removable blanking caps.

TECHNICAL PARAMETERS

Standards	BS EN60669-1
Protection degree	IP66
Contact Gap	3.0mm minimum
Terminal Capacity	4×1.0mm ² , 4×1.5mm ² , 2×2.5mm ² , 1×4.0mm ²
Terminal type	Screw terminal
Install screw torque	0.8N.m
Strip length of wiring	10mm
Material	Base: PC Mounting bracket: PC Sleeve: phosphor copper
Flame-retarded resin	Plastic parts with current carrier and grounding parts in normal positions : 850 ° C; For other positions :650 ° C
Approval	IP66 CE

13A SWITCH SOCKETS – IP66



- Stylish modern profile
- Colour coded terminals with backed out captive screws for easy installation
- Covers to seal the fixing screws
- 2 Earth terminals in socket
- All cable entries in the 4 sides have removable blanking caps.
- Cover will stay open to allow for easy access to sockets
- See-through cover allows status of switches to be seen Latched type.

TECHNICAL PARAMETERS

Standards	BS 1363
Protection degree	IP66
Contact Gap	3.0mm minimum
Terminal Capacity	3×2.5mm ² , 3×4mm ² , 2×6.0mm ²
Terminal type	Screw terminal
Install screw torque	0.8N.m
Strip length of wiring	10mm
Material	Base: PC Mounting bracket: PC Sleeve: phosphor copper
Flame-retarded resin	Plastic parts with current carrier and grounding parts in normal positions : 850 ° C; For other positions :650 ° C
Approval	IP66 CE



RR ELECTRICAL MIDDLE EAST FZC


2903, 2904, 2905 & 2906, Iris Bay, Happiness Street, Business Bay, Dubai - U.A.E.

T: +971-4-330 3466 • F: +971-4-3301533 • E: rrelectrical@me-rrglobal.com

Registered Office:

Ram Ratna House, Utopia City, P. B Marg, Worli, Mumbai - 400 013, INDIA.

T: +9 -22-2494 9009 / 2492 4144 • F: +91-22-2493 0203 / 2493 2339

www.rrglobal.com |    YouTube

The information & technical data mentioned in this brochure is true, complete and correct. However, the technical data could vary from time to time, hence, current details should always be checked with RR Global for accuracy.